

FIBREX[®]

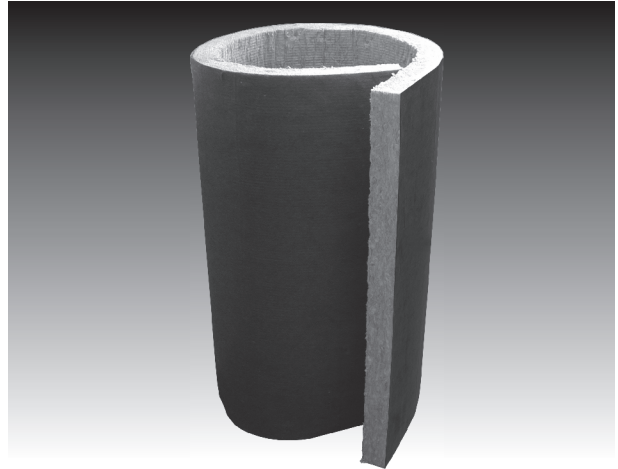
THERMAWRAP INSULATION

FibreX - Thermawrap Insulation is a wrap type product ideally suited for large bore pipes, tanks, vessels, cylindrical ducts, and equipment on industrial and commercial jobsites.

FibreX - Thermawrap has a specific oriented fiber construction that provides flexibility, good compressive strength values, excellent thermal performance, acoustical and fire resistance properties, while supporting a minimum service temperature of 100°F (38°C) to a maximum of 1200°F (649°C).

FibreX - Thermawrap can be substituted for traditional pipe and tank wraps that can be less stable during handling, fabrication, and installed procedures.

FibreX - Thermawrap is a black glass mat faced insulation that is produced in a roll form at 48" (1220mm) wide and thicknesses from 1.5" (38mm), 2" (50mm), 2.5" (63mm), and 3" (76mm) respectively, to comply with traditional and specific, tank and pipe insulation applications.



FEATURES

- Solid thermal performance
- Wide range of service temperatures
- Applicator friendly and easy to install
- Non-wicking
- Good compressive strength
- Shrinkage of 0% @ 1,050°F (551°C)

BENEFITS

- Energy conservation - personnel protection
- Continuous service (100°F through 1200°F)
- Less dusty and cuts with a knife
- Good water shedding characteristics
- Solid and resilient for banding and jacketing
- Butt ends of roll joints knit well together

GENERAL INFORMATION

- Density (nominal 8#) (128 kg/m³)
- Service temperature (up to 1200°F) (649°C)
- Water vapour sorption (ASTM C1104)
- Wicking characteristics (ASTM C800)
- Asbestos free
- Stress corrosion (ASTM C795, C871, C692)
- Combustibility (ASTM E136)(CAN/ULC S114)
- Surface burning characteristics
- Hot surface performance - high temperature
- Acoustical performance
- Thermal conductivity (BTU in./hr/ft²°F)(W/M°C)

- ASTM C553 Compliance: Mineral Fiber Blanket (Type VII)
 - Thickness range: 1.5" - 3" (½" increments)
 - No heat-up schedule required
 - <1% - will not promote fungus or mildew
 - <1% after 24 hours - non hydroscopic
 - None
 - None - stainless steel, copper, aluminum
 - Non-combustible
 - ASTM E84 and CAN/ULC S102 Flame - 8, Smoke - 4
 - ASTM C411
 - ASTM C522 (Air flow resistivity method)
 - ASTM C177



561 SCOTT ROAD, SARNIA, ONTARIO CANADA N7T 7L4

www.fibrexinsulations.com

CUSTOMER SERVICE: 1-800-265-7514 1-519-336-7770 FAX: 1-800-363-4440

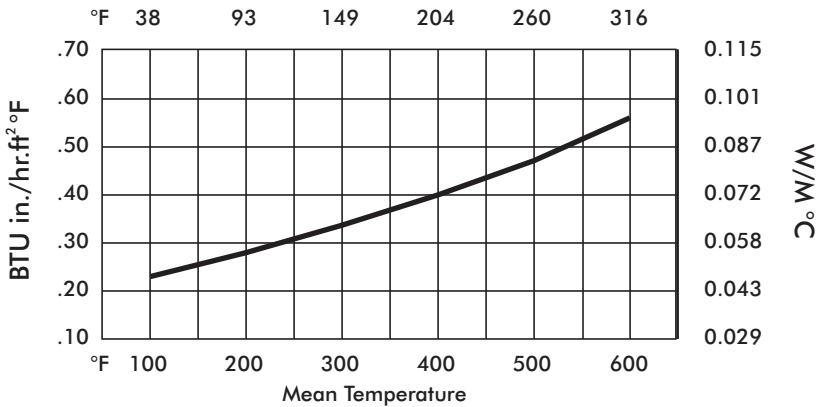
Technical Information: 1-800-585-8857

FIBREX[®]

THERMAWRAP INSULATION

THERMAL CONDUCTIVITY PERFORMANCE (ASTM C177)

| Mean Temperature | "K" - BTU in./hr.ft ² °F | Mean Temperature | "K" - W/M °C |
|------------------|-------------------------------------|------------------|--------------|
| 100°F | 0.230 | 38°C | 0.034 |
| 200°F | 0.280 | 93°C | 0.041 |
| 300°F | 0.340 | 149°C | 0.049 |
| 400°F | 0.400 | 204°C | 0.058 |
| 500°F | 0.470 | 260°C | 0.068 |
| 600°F | 0.560 | 316°C | 0.082 |



RECOMMENDED THICKNESS @ Various Operating Temperatures

- 350°F (176°C) 1.5" (38mm) - 2" (50mm)
- 450°F (232°C) 2" (50mm) - 2.5" (63mm)
- 550°F (288°C) 2.5" (63mm) - 3" (76mm)
- 650°F (343°C) 3.5" (89mm) - 4" (102mm)
- 750°F (399°C) 4" (102mm) - 5" (127mm)

** Note: Fibrex - Thermawrap Insulation can be easily nested or double layered without concern of overheating the glass mat surface (glass mat is the only facing offered on this product) (maximum recommended interface temperature of any double layer - Thermawrap system not to exceed 850°F (482°C), while observing a maximum operating temperature of 1200°F (649°C)



561 SCOTT ROAD, SARNIA, ONTARIO CANADA N7T 7L4
www.fibrexinsulations.com
 CUSTOMER SERVICE: 1-800-265-7514 1-519-336-7770 FAX: 1-800-363-4440
 Technical Information: 1-800-585-8857